

Product Specifications



Upright

Inverted

18.6in
472mm



23.0in
585mm

13.4in
341mm

Stand

UPRIGHT and INVERTED observation modes

Remote focus knob for focus and image capture

Repeatable camera and LED light settings

Anti-Shake feature: Leverages built in accelerometer to minimize the effect of external vibrations prior to image capture

Motorized Epi-Fluorescence Turret

Ultra-bright LEDs with 50,000-hour lifespan

Mercury-Free Illumination

Outstanding long-term stability with precise illumination control

5 Imaging Channels:
4 Epi-Fluorescence + 1 Transmitted Light

Sample Protect Mode: Allows the user to control sample's exposure to excitation light

Optics

Optical components by Olympus®

Intelligent Nosepiece informs software which objective is in use

1.25x – 100x (dry and immersion available)

Plan Achromat, Plan Fluorite, and Plan Apochromat options

Extra Long Working Distance (ELWD) condenser available

High Resolution (High N.A.) condenser available

Display

12.9" Retina® Display

2732 x 2048 (264 ppi)

Full Circular field of view as seen through conventional eyepieces

Touchscreen interface

Cameras

Brightfield

- 12MP CMOS Color camera

Fluorescence

- 5MP sCMOS Monochrome camera
- 2448 x 2048 (Pixel Size 3.45µm)

Software

Touch interface for microscope and camera control

Measurement annotations: Length, Area, Cell Count, Scale Bar

Digital Haze Reduction available for image enhancement

Customizable image overlay tools

Downloads and updates available via App Store

Data Transfer

USB

AirDrop® (iOS and Mac)

Seamless integration with file sharing and cloud storage apps (Dropbox™)

Z-Stack

Optional Module

Capture multiple focal planes with ease

Operates in fluorescence with multi-channel acquisition capabilities

Step sizes can be assigned by users, or defined based upon Nyquist sampling

Configurations

Upright

Ideal for viewing glass slides.
Clean approach to oil immersion applications.
Useful for Water Dipping applications.
Use with optional high resolution condenser.

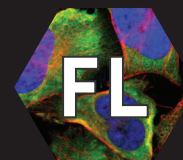


Inverted

Designed for viewing live samples in fluidic chambers, such as dishes and well plates. Allows for easier manipulation of samples. Ideal for Long Working Distance applications.

Brightfield

Stunning detail. Perfect color.
12 MP color camera.
HD video, 120 fps.



Fluorescence

Exceptional performance.
No Darkroom required.
5 MP monochrome sCMOS Camera.